

Directions

The Great Escape Lodge and Waterpark 1213 State Route 9, Queensbury, NY 12804

From Albany, NY (from South):

I-87 North (Adirondack Northway) to Exit 20.
South on Route 9 approximately ¼ mile
Turn right onto Six Flags Drive.

From Rutland, VT (from East):

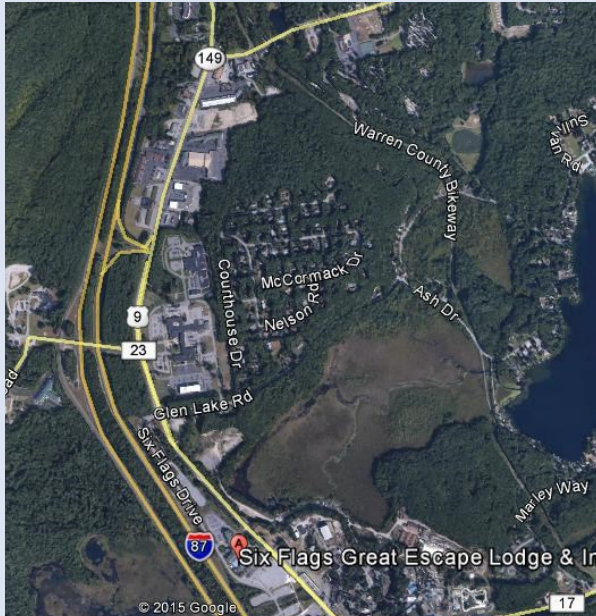
Route 7 South to Route 4.
West on Route 4 to Route 149 West
Route 149 to Route 9, turn left.
South on Route 9 approximately one mile
Turn right onto Six Flags Drive.

From Syracuse, NY (from West):

I-90 East (NYS Thruway)
Exit 24 to Albany
North on I-87 (Adirondack Northway) to Exit 20
South on Route 9 approximately ¼ mile
Turn right onto Six Flags Drive.

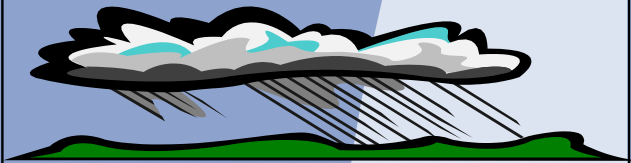
From Plattsburgh, NY (from North):

Take I-87 South (Adirondack Northway) to Exit 20
South on Route 9 approximately ¼ mile
Turn right onto Six Flags Drive.



North Country Stormwater Tradeshow & Conference
C/O CWICNY
PO Box 765
Lake George, NY 12845

13th Annual North Country Stormwater Tradeshow & Conference



**Thursday
October 19th, 2017
8:30 am - 4:00 pm
The Great Escape Lodge
Queensbury, NY**

Sponsored By
**Champlain Watershed
Improvement Coalition of NY**
and
NYS DEC

North Country Stormwater Tradeshow & Conference

Registration Form

Early Registration Fee - **\$80** (Before October 12th)

Late Registration Fee - **\$95** (After October 12th)

Make Checks or Vouchers payable to **CWICNY** and
send to:



CWICNY
PO BOX 765
Lake George, NY 12845
Fax: (518) 668-5774

NO REFUNDS WILL BE GIVEN AFTER OCTOBER 12, 2017
NO-SHOWS WILL BE CHARGED

Name: _____

Organization: _____

Address: _____

City, State, Zip: _____

Phone Number: _____

Email Address: _____

Are you a (blank) who would like credits:

- Liscenced Engineer or Landscape Architect
 CPESC
 Code Enforcement Officer
 Other: _____

2017 Conference Line-Up

West of Hudson Stormwater Program

*Joe Damrath, CPSWQ, Stormwater Program
Supervisor, NYC DEP Water Supply Bureau*

The New York City Department of Environmental Protection funds and implements a comprehensive Long-Term Watershed Protection Program which maintains and protects the high quality sources of drinking water for nine million water consumers. Much of this work includes stormwater management, and this presentation will focus on the work that is being completed in the West of Hudson district for stormwater retention and infiltration and regulation compliance.

CSO Green Infrastructure Strategic Planning

*Martin Daley, CDRPC, Bradley Grant &
Nadine Medina, Barton & Loguidice*

Six Capital District communities have developed a joint Long Term Control Plan (LTCP) that will, through the implementation of more than 53 projects and programs, significantly abate Combined Sewer Overflow discharges and demonstrably achieve water quality. The LTCP is jointly funded and implemented by "Albany Pool Communities" and includes several innovative Green Infrastructure (GI) strategies. Topics for discussion include a Green Infrastructure Audit, a feasibility assessment for a Green Infrastructure Credit and Banking System, and development of pool-wide Green Infrastructure Tool Box.

Water Quality Improvement Projects

Sponsors & Vendors

Four 15-minute presentations on new and innovative ways to manage stormwater runoff.

Airborne LiDAR for Urban Drainage Projects

Benjamin Houston, VP, Civic Mapper

Airborne LIDAR data for topographic mapping is becoming more and more ubiquitously available in many parts of the country. Several ongoing urban drainage projects have demonstrated that LIDAR data meeting the USGS QL 2 standard can adequately characterize surface flows across urban and suburban environments sufficient to support storm water design criteria. Results will be presented based on projects conducted in Los Angeles, CA, Pittsburgh, PA and Kingston, NY. The program will also discuss the varying USGS LIDAR quality levels and their relationship with industry standards for accuracy and design.

Stormwater Regs for Improved Water Quality

Joe Thouin, LG Park Commission

The Lake George Park Commission is currently updating their stormwater regulations for construction and post-construction runoff management. The Commission has some of the most stringent stormwater regulations in the area, and can serve as a model to surrounding MS4 communities on how to create and implement improved stormwater runoff control regulations.

Registration begins at 8:00 am. Conference begins promptly at 8:30 am.

4.0 Professional Development Hours pending and 3.0 Code Enforcement PDE credits available.

Two half-hour breaks and buffet lunch included. Register early, space is limited!

For more information, please contact
Beth Gilles, Lake Champlain—Lake George RPB
at bgilles_rpb@verizon.net or (518) 668-5773

Accommodations

The Great Escape Lodge has set aside a block of rooms at \$99.00/night. Please contact them at 518-824-6060 and mention that you are with the North Country Stormwater Tradeshow & Conference.